

Appendix J

Traffic Distribution and Generation of  
Proposed Site

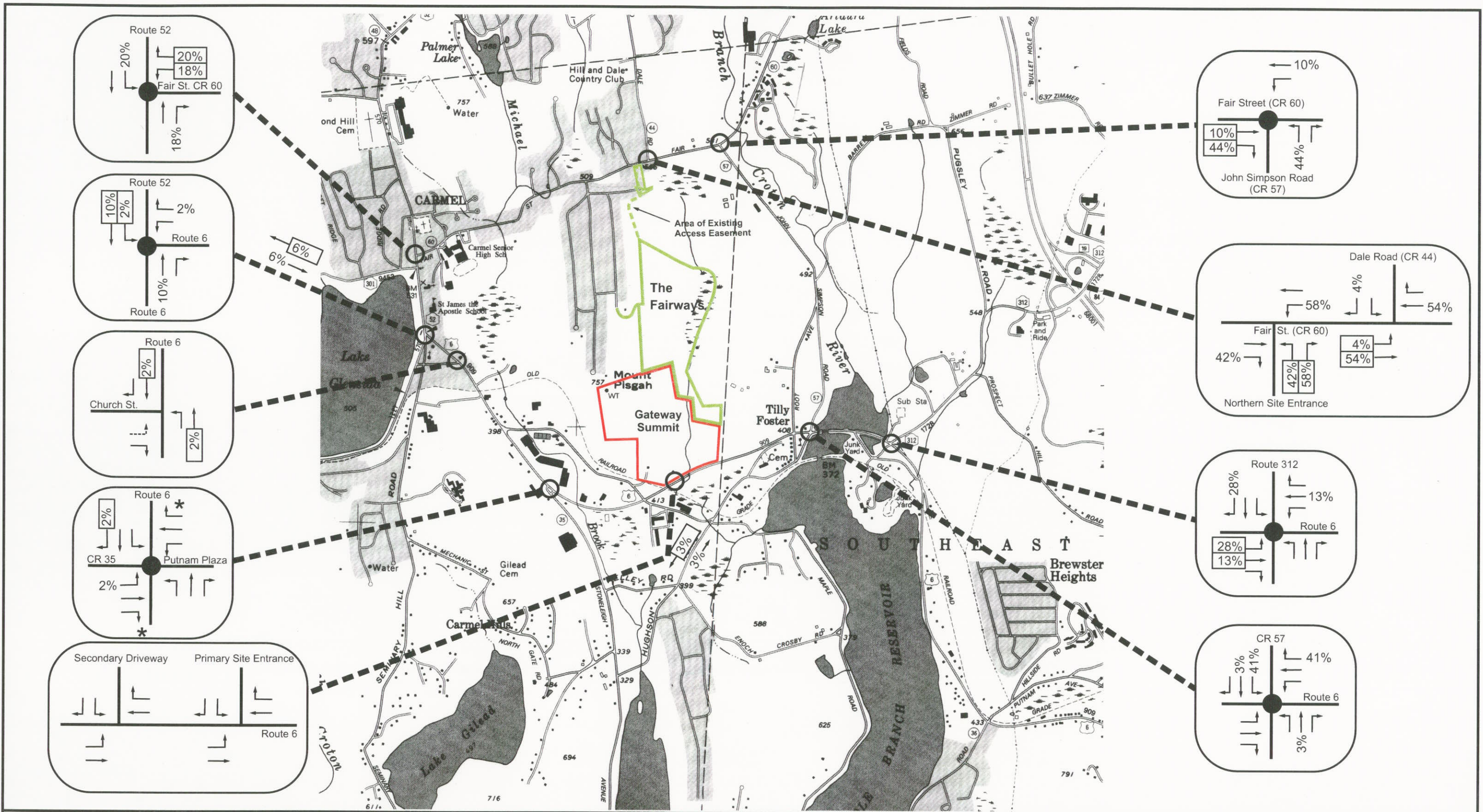
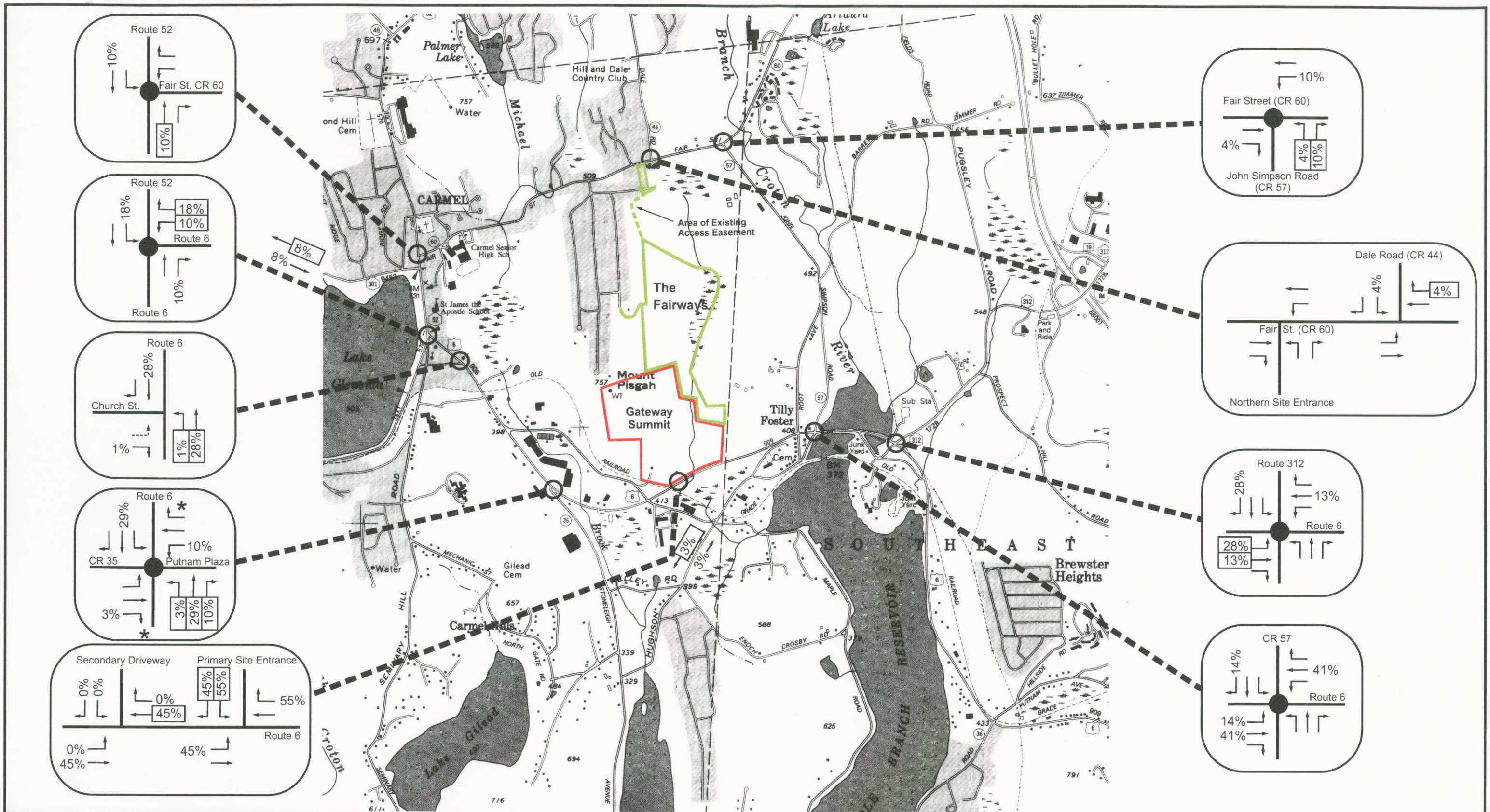


Figure J-1: Fairways Residential Site Trip Distribution  
 Peak Hour Traffic  
 Gateway Summit / The Fairways  
 Town of Carmel, Putnam County, New York  
 Base Map: NYSDOT Planimetric Map (Lake Carmel Quad)  
 Scale: 1" = 2000'



KEY		Residential External Trips	
<span style="color: red;">—</span>	Gateway Summit	XX%	Inbound
<span style="color: green;">—</span>	The Fairways	XX%	Outbound
○	Intersections Studied		
●	Traffic Signal Controlled		
*	Stop or Yield Controlled Channel		
---	Illegal Left Turn		

Figure J-2: Gateway Residential Site Trip Distribution  
 Peak Hour Traffic  
 Gateway Summit / The Fairways  
 Town of Carmel, Putnam County, New York  
 Base Map: NYSDOT Planimetric Map (Lake Carmel Quad)  
 Scale: 1" = 2000'

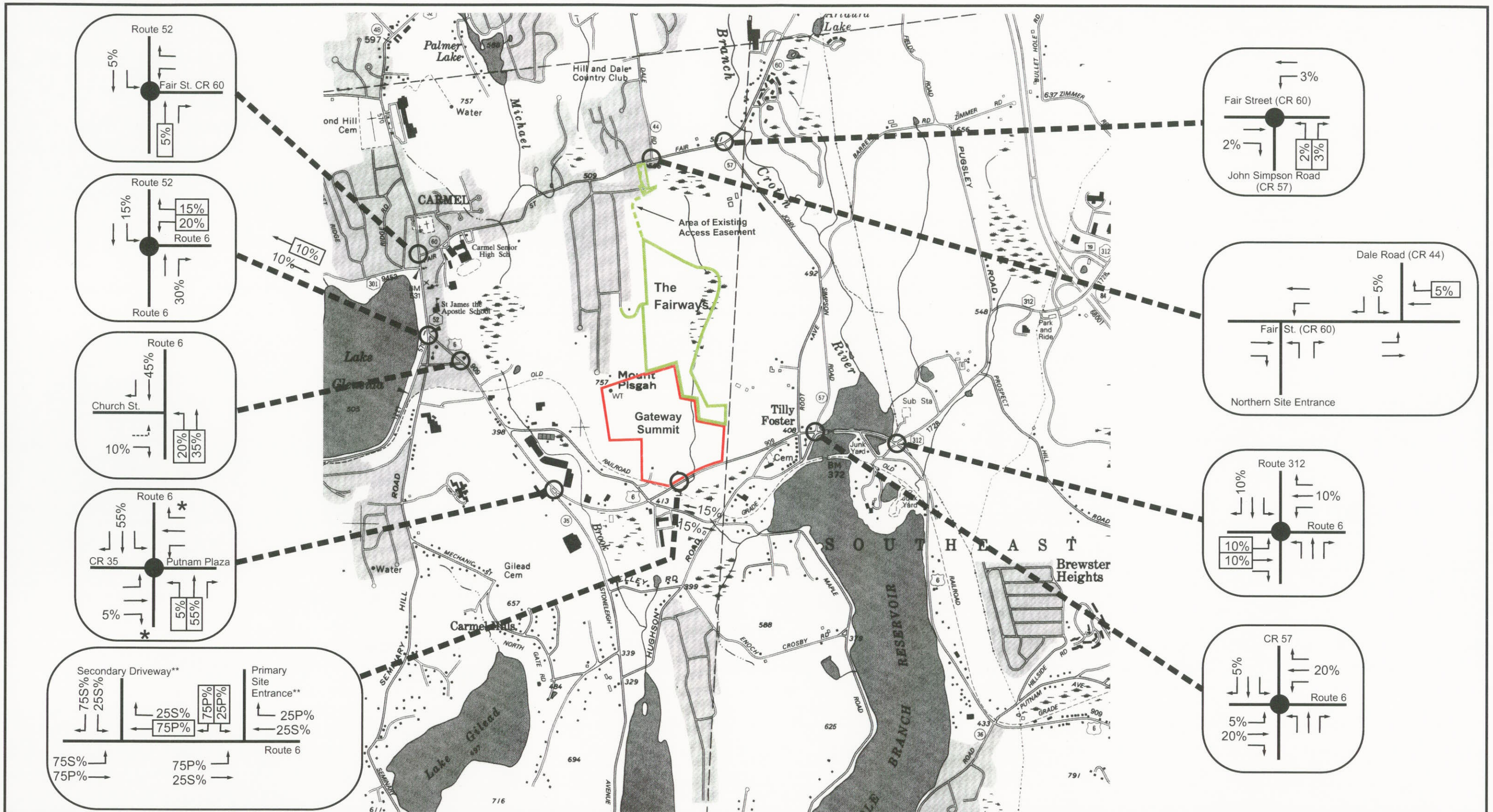
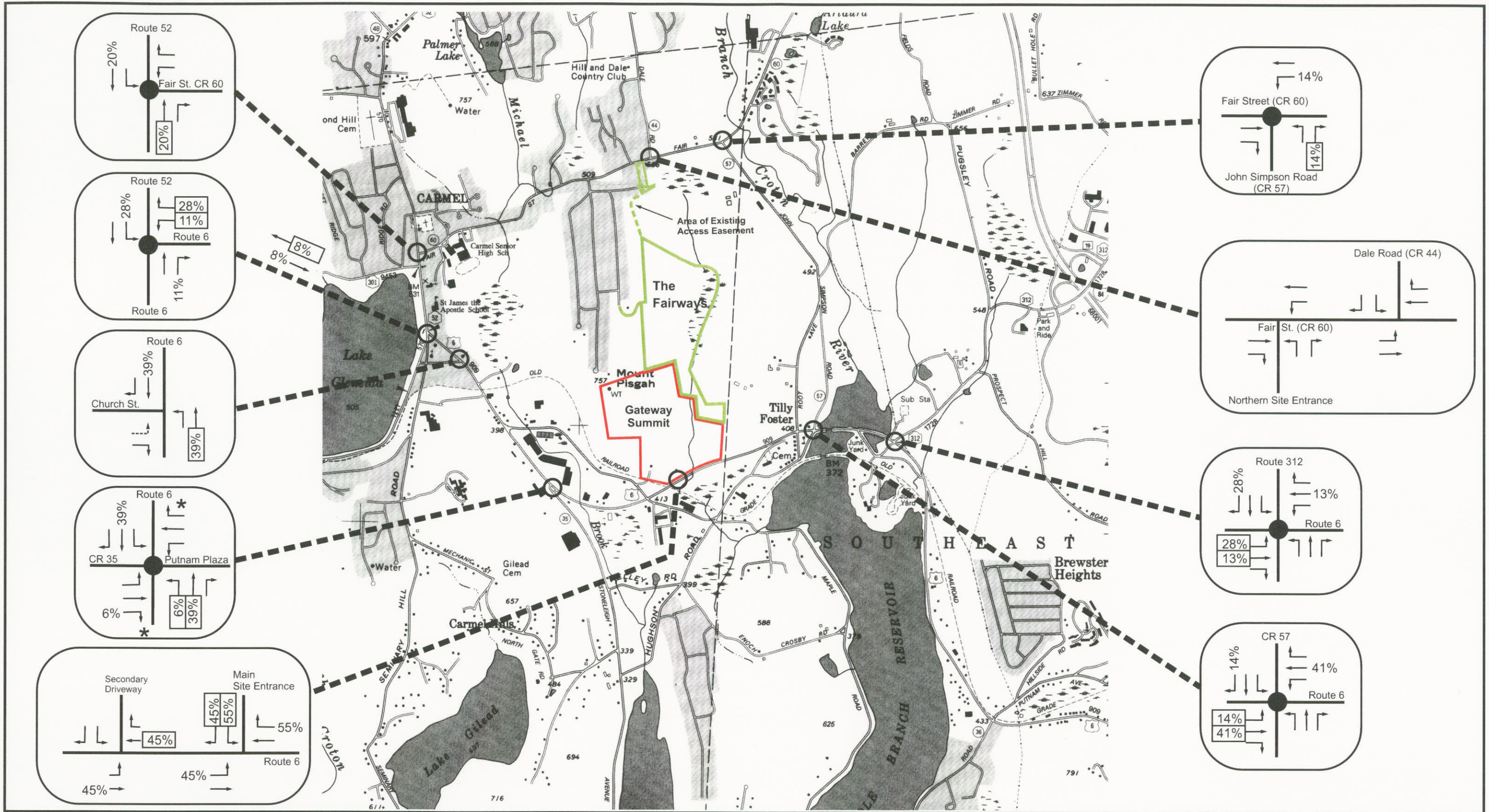


Figure J-3: Primary Site Traffic Distribution  
 Gateway Summit / The Fairways  
 Town of Carmel, Putnam County, New York  
 Base Map: NYSDOT Planimetric Map (Lake Carmel Quad)  
 Scale: 1" = 2000'



**KEY**

<span style="color: red;">—</span>	Gateway Summit	<span style="color: green;">—</span>	Hotel External Trips
<span style="color: green;">—</span>	The Fairways	○	XX% Inbound
○	Intersections Studied	●	XX% Outbound
*	Traffic Signal Controlled	*	Stop or Yield Controlled Channel
---	Illegal Left Turn		

**Note:** Hotel Area Gateway Summit Lot 1 and Lot 5

**Figure J-4: Hotel Area Site Traffic Distribution**  
 Gateway Summit / The Fairways  
 Town of Carmel, Putnam County, New York  
 Base Map: NYSDOT Planimetric Map (Lake Carmel Quad)  
 Scale: 1" = 2000'

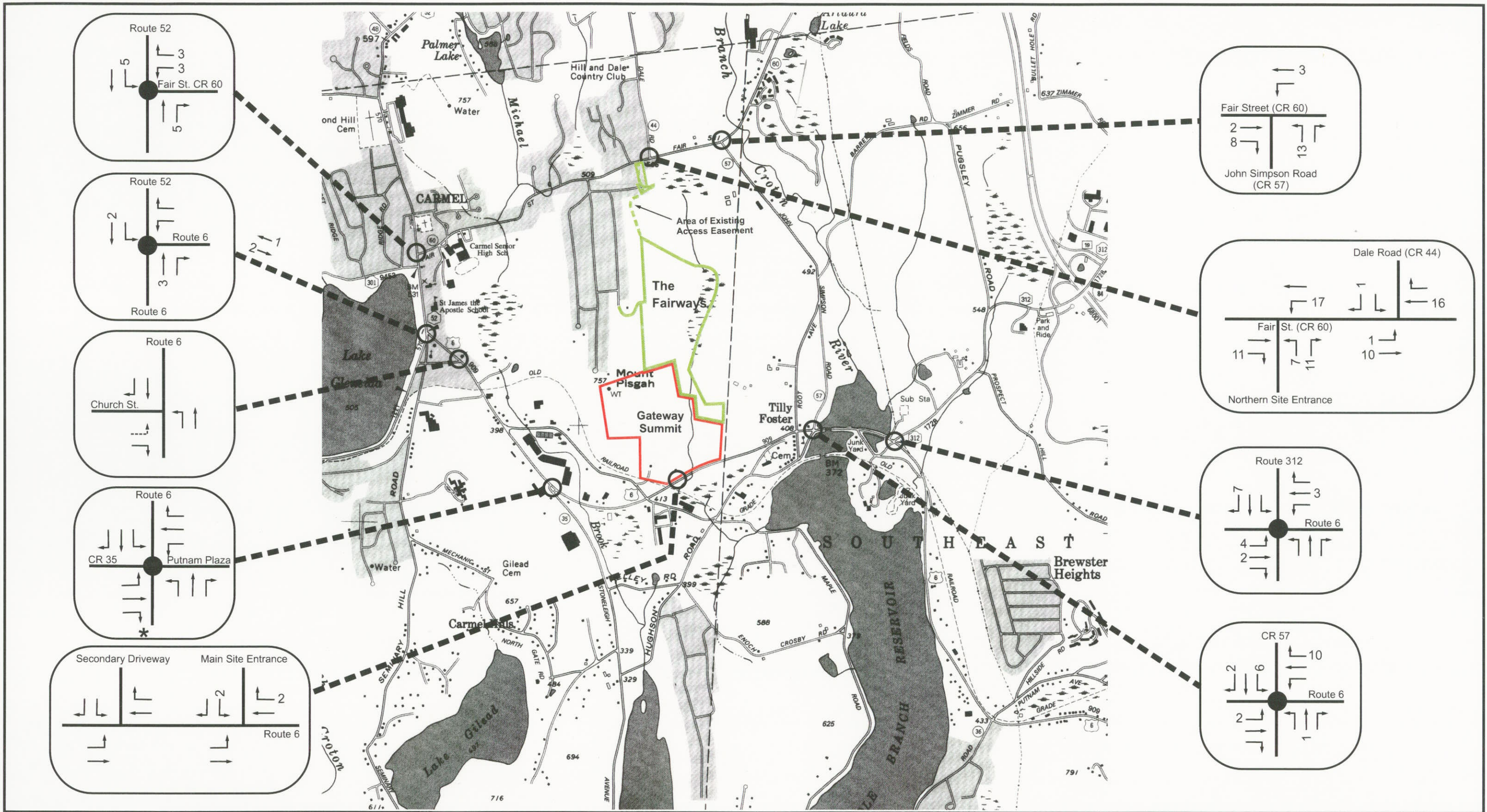
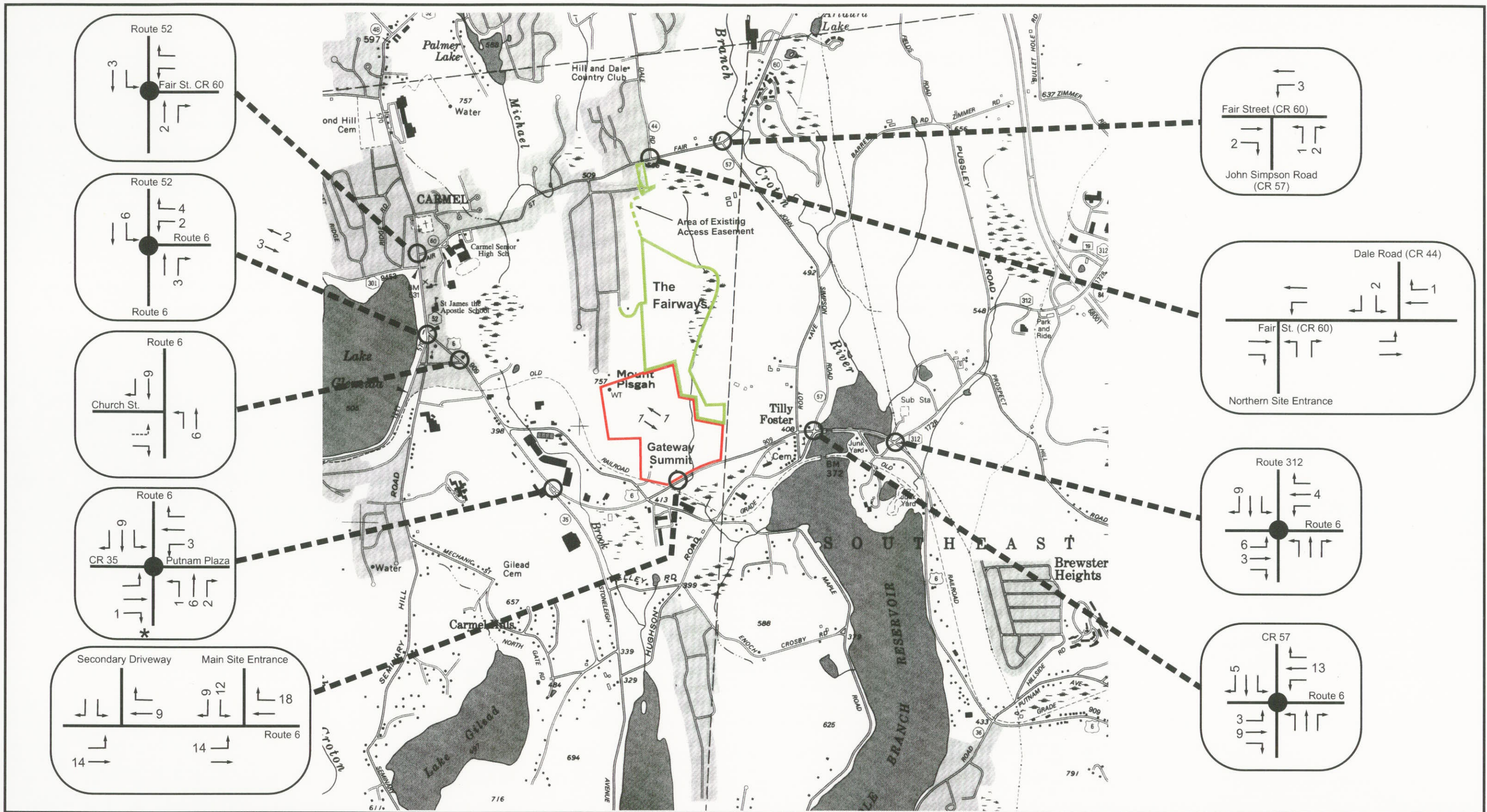


Figure J-5: PM Fairways Residential Site Generated Traffic  
 Gateway Summit / The Fairways  
 Town of Carmel, Putnam County, New York  
 Base Map: NYSDOT Planimetric Map (Lake Carmel Quad)  
 Scale: 1" = 2000'

**KEY**

- Gateway Summit
- The Fairways
- Intersections Studied
- Traffic Signal Controlled
- \* Stop Controlled Channel
- Illegal Left Turn



- KEY**
- Gateway Summit
  - The Fairways
  - Intersections Studied
  - Traffic Signal Controlled
  - \* Stop Controlled Channel
  - Illegal Left Turn

Note: Lot 6 traffic Gateway Summit residential

Figure J-6: PM Gateway Residential Site Generated Traffic  
 Gateway Summit / The Fairways  
 Town of Carmel, Putnam County, New York  
 Base Map: NYSDOT Planimetric Map (Lake Carmel Quad)  
 Scale: 1" = 2000'

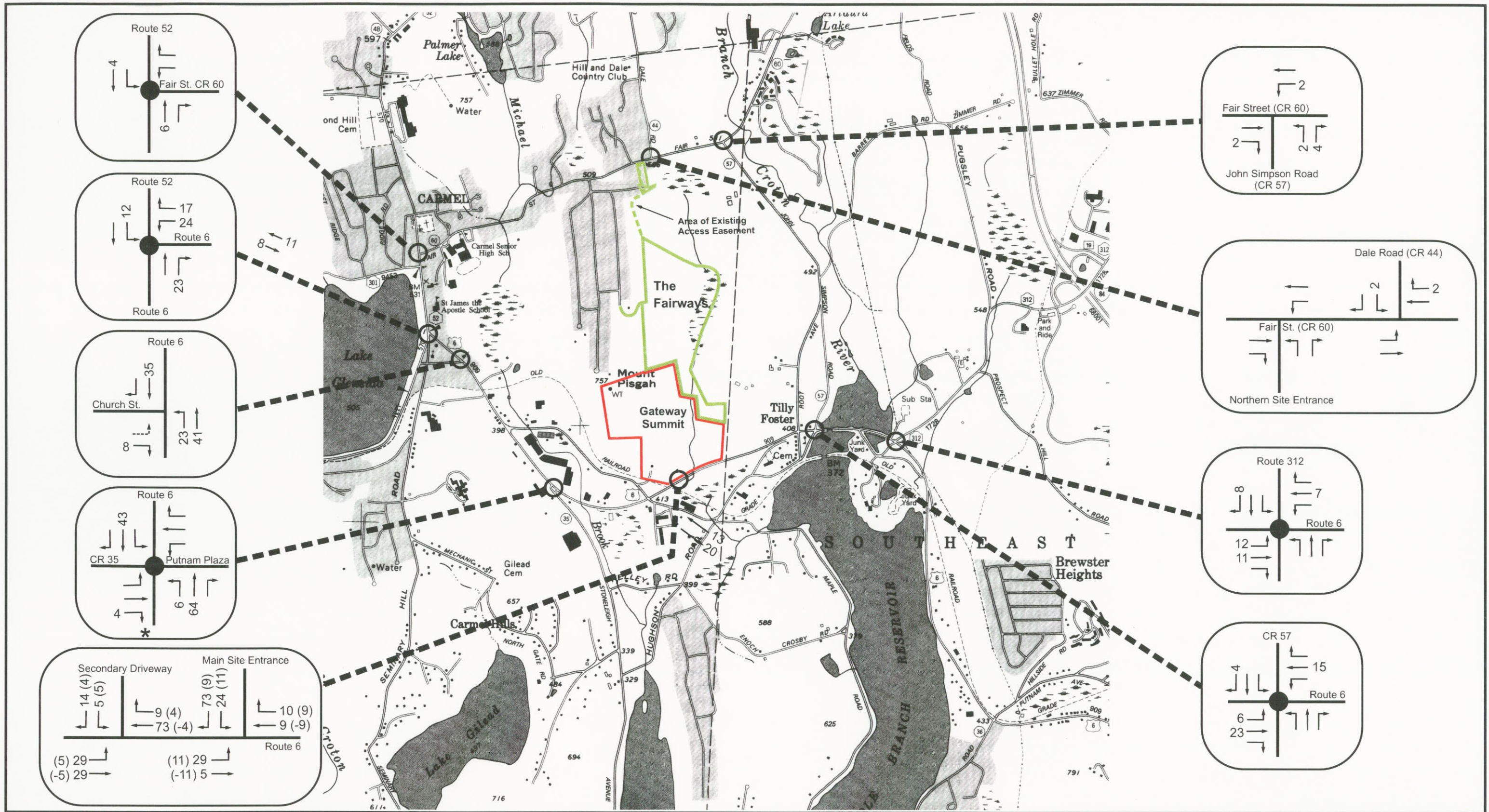


Figure J-7: PM Primary Site Generated Trips  
 Gateway Summit / The Fairways  
 Town of Carmel, Putnam County, New York  
 Base Map: NYSDOT Planimetric Map (Lake Carmel Quad)  
 Scale: 1" = 2000'

**KEY**

- Gateway Summit
- The Fairways
- Intersections Studied
- Traffic Signal Controlled
- \* Stop Controlled Channel
- Illegal Left Turn
- XX Inbound Trips
- (XX) Outbound Trips

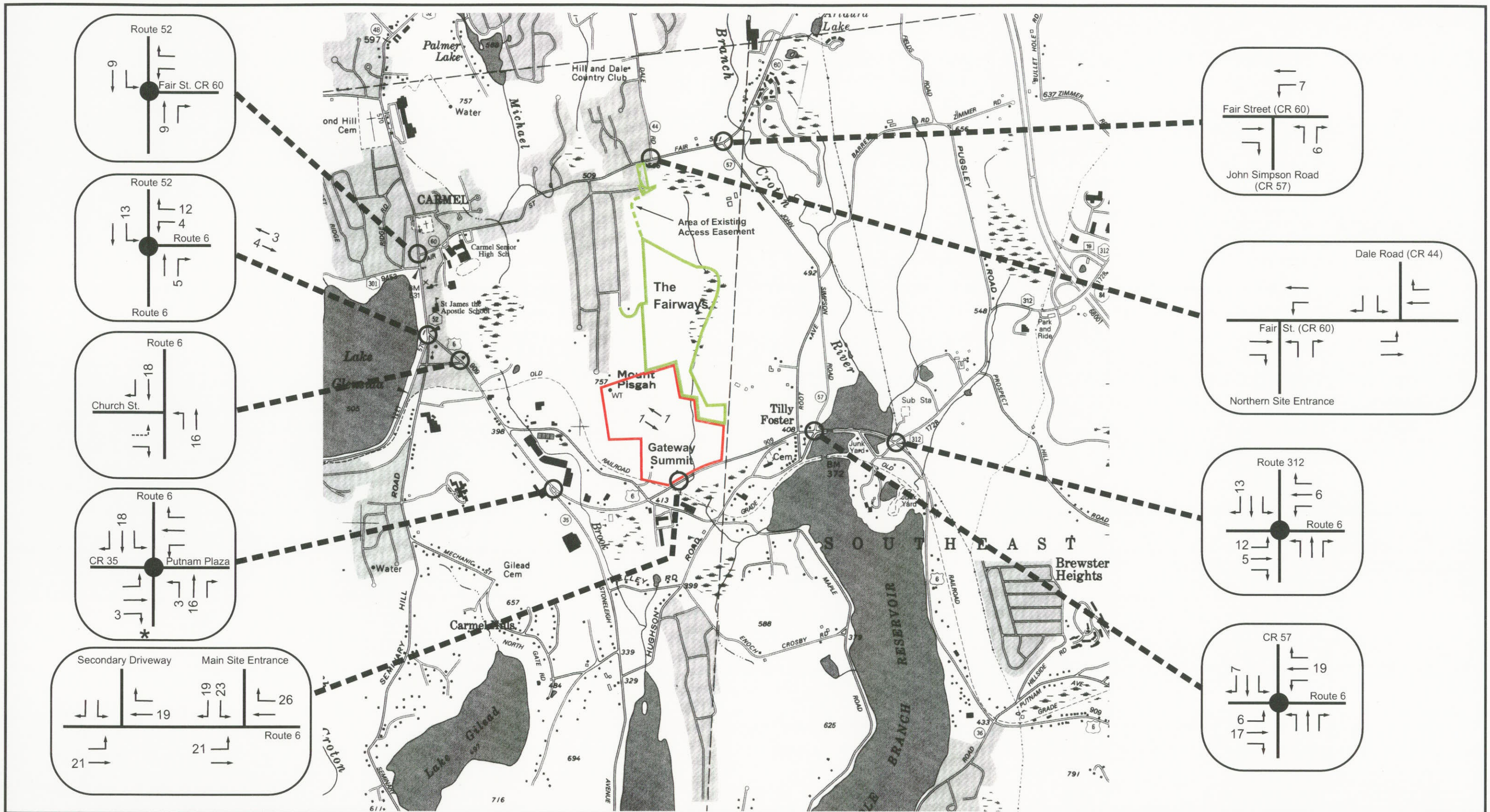
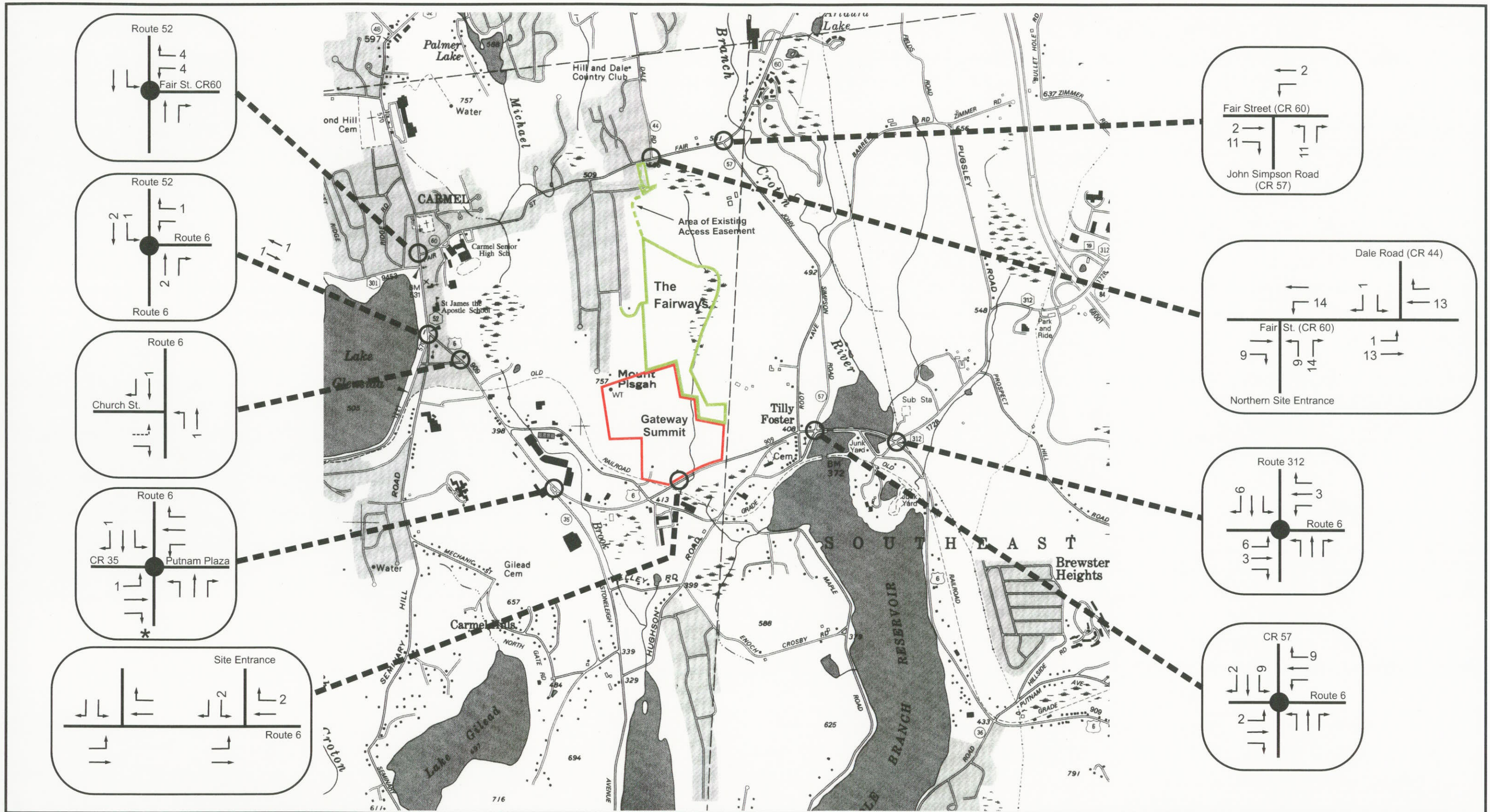


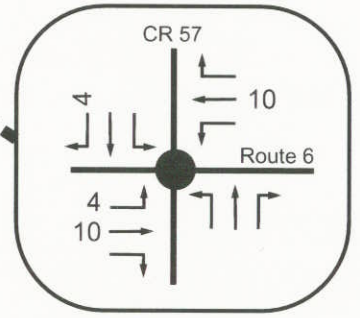
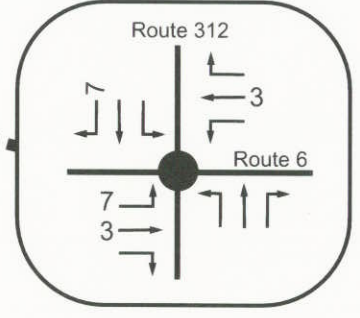
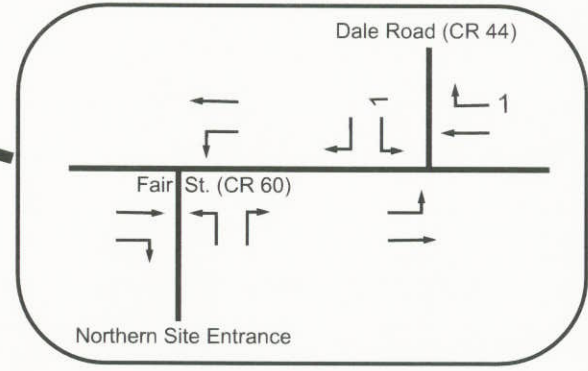
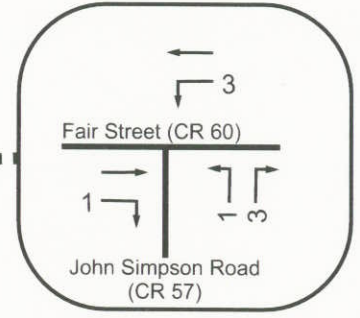
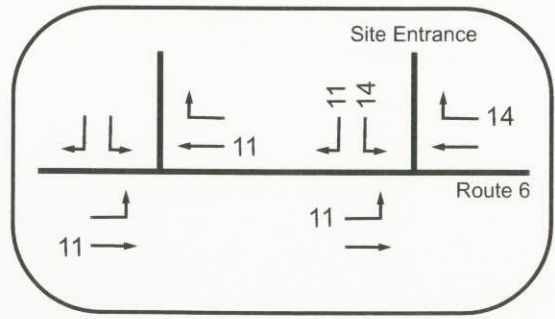
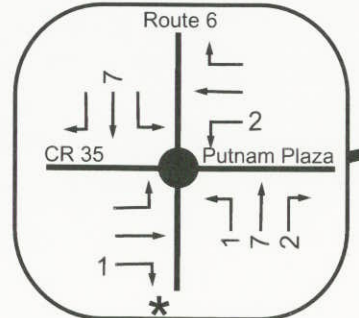
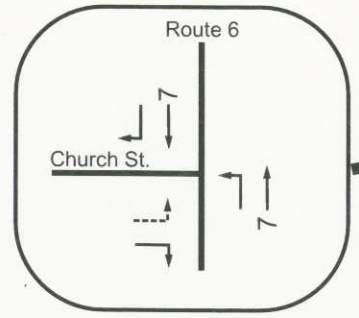
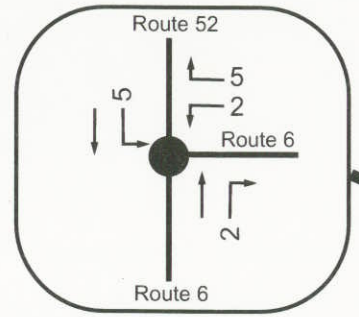
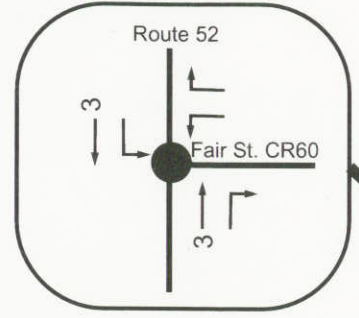
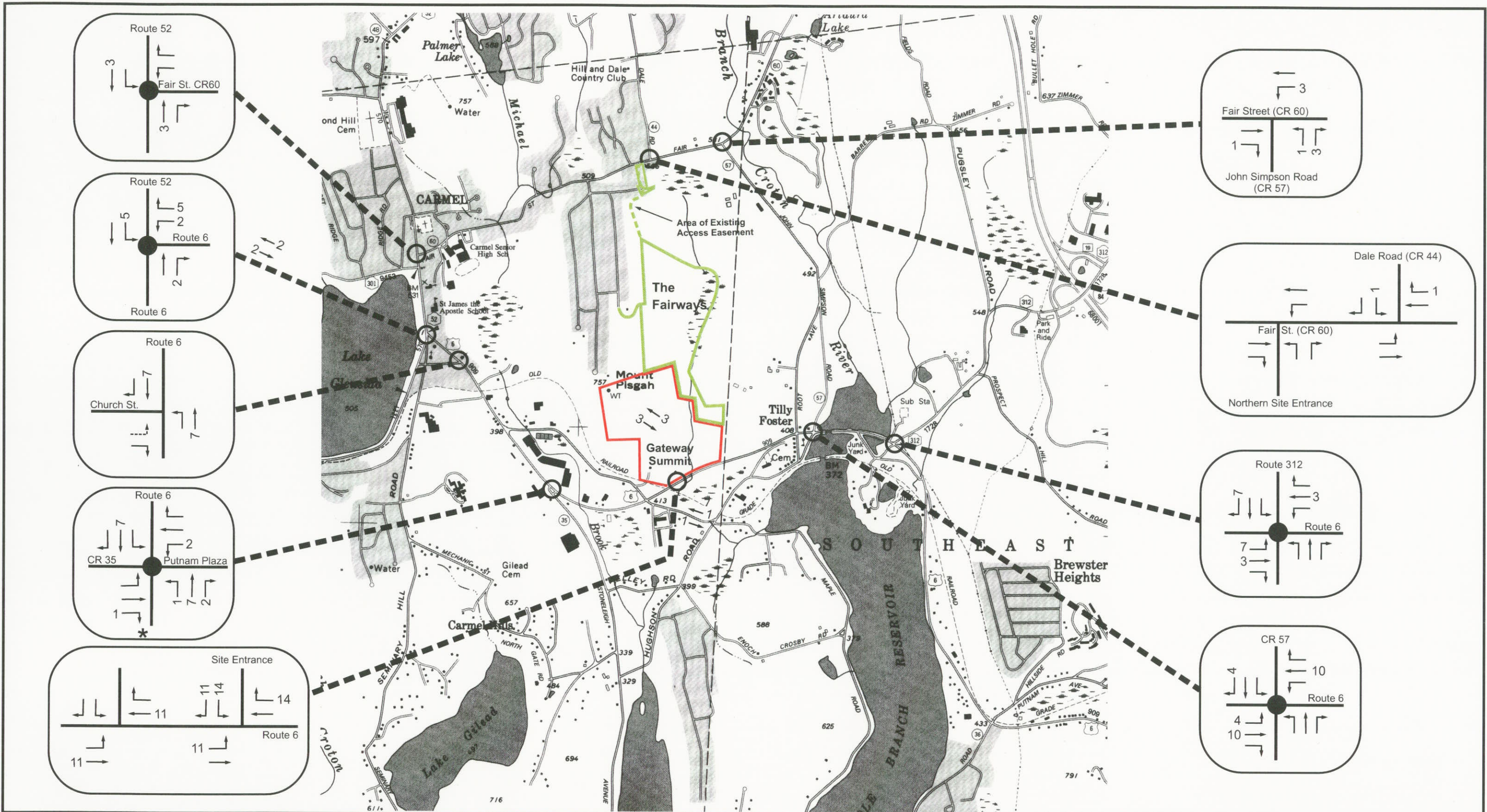
Figure J-8: PM Hotel Area Site Generated Traffic  
 Gateway Summit / The Fairways  
 Town of Carmel, Putnam County, New York  
 Base Map: NYSDOT Planimetric Map (Lake Carmel Quad)  
 Scale: 1" = 2000'



**KEY**

<span style="color: red;">—</span>	Gateway Summit
<span style="color: green;">—</span>	The Fairways
○	Intersections Studied
●	Traffic Signal Controlled
*	Stop Controlled Channel
---	Illegal Left Turn

Figure J-9: Saturday Fairways Residential Site Generated Traffic  
 Gateway Summit / The Fairways  
 Town of Carmel, Putnam County, New York  
 Base Map: NYSDOT Planimetric Map (Lake Carmel Quad)  
 Scale: 1" = 2000'

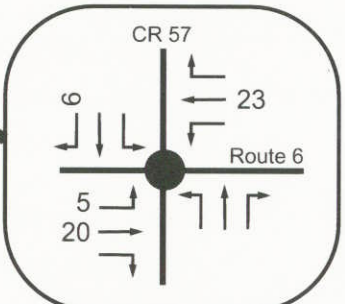
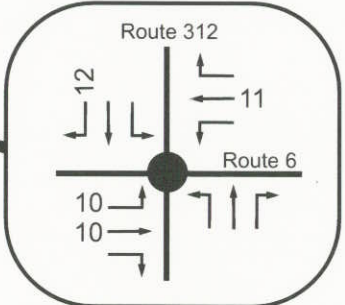
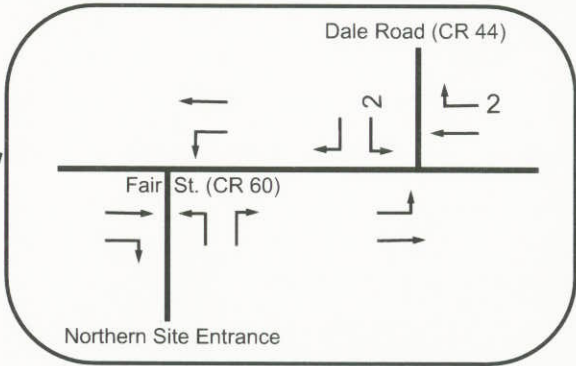
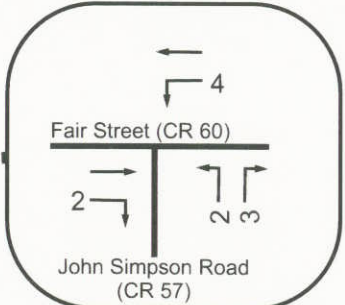
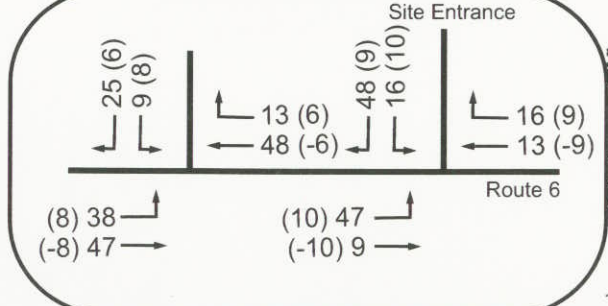
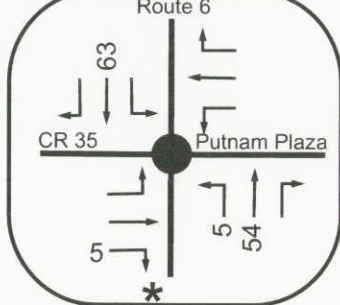
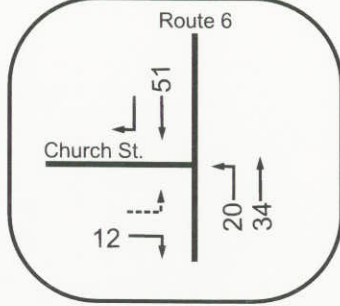
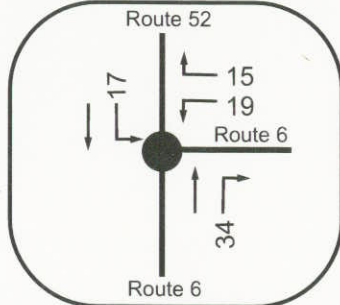
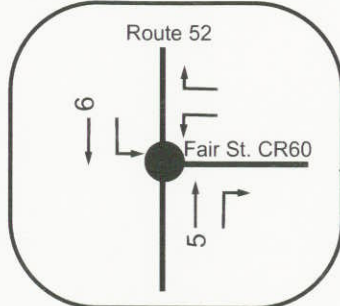
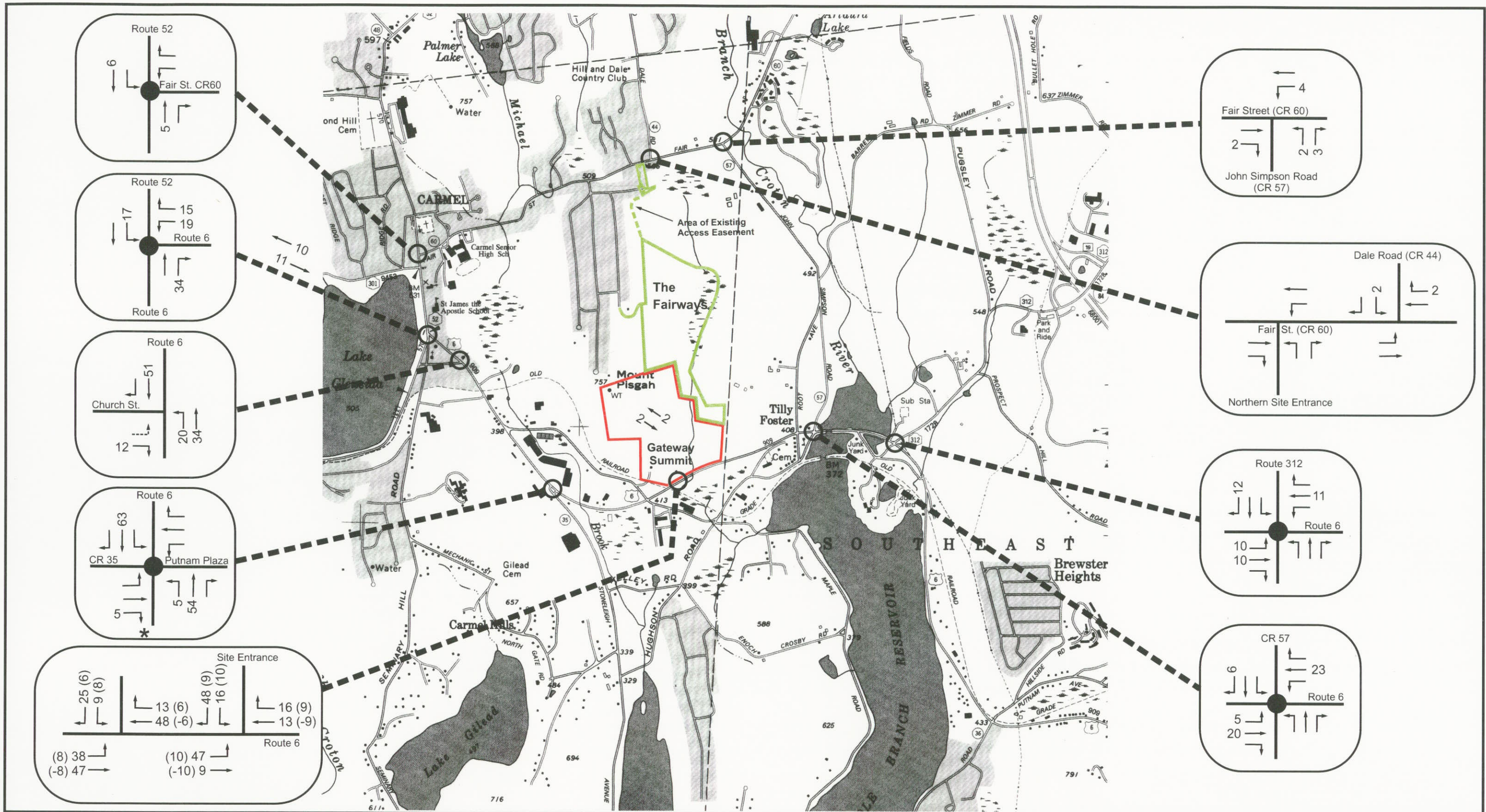


- KEY**
- Gateway Summit
  - The Fairways
  - Intersections Studied
  - Traffic Signal Controlled
  - \* Stop Controlled Channel
  - Illegal Left Turn

Note: Lot 6 traffic Gateway Summit residential

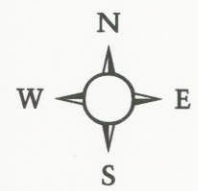
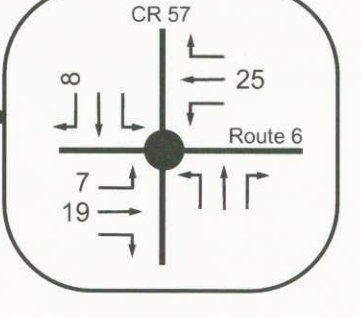
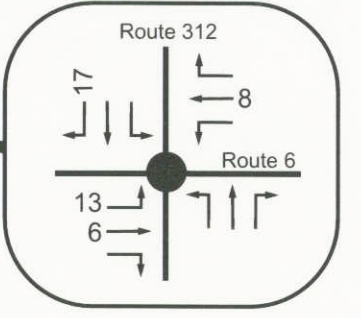
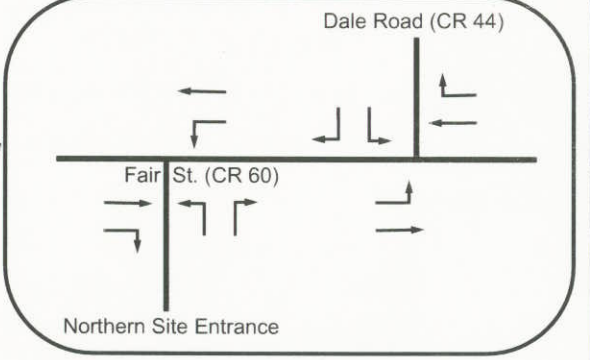
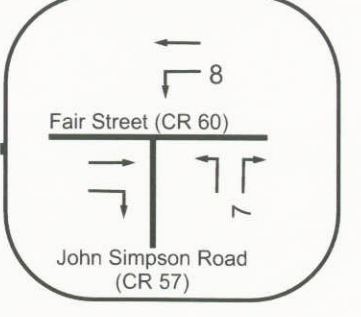
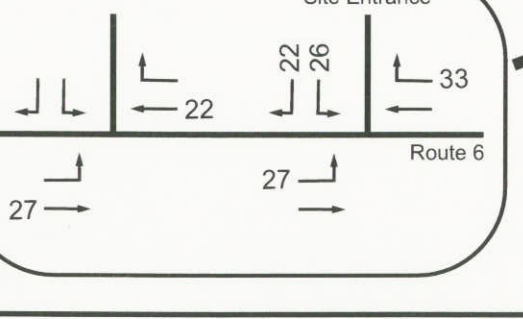
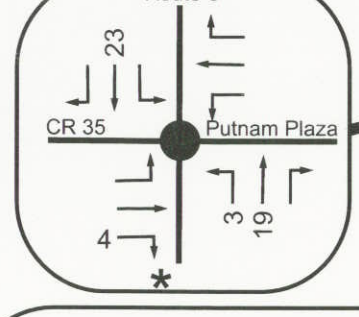
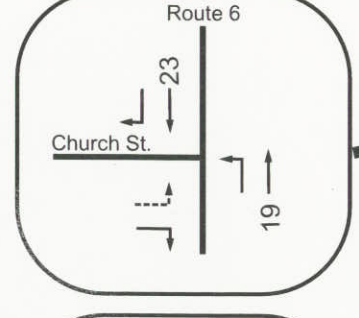
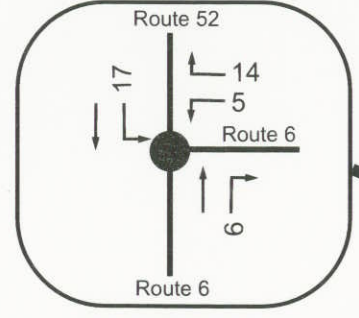
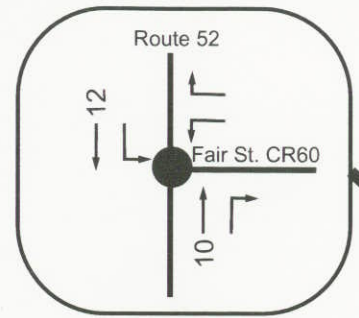
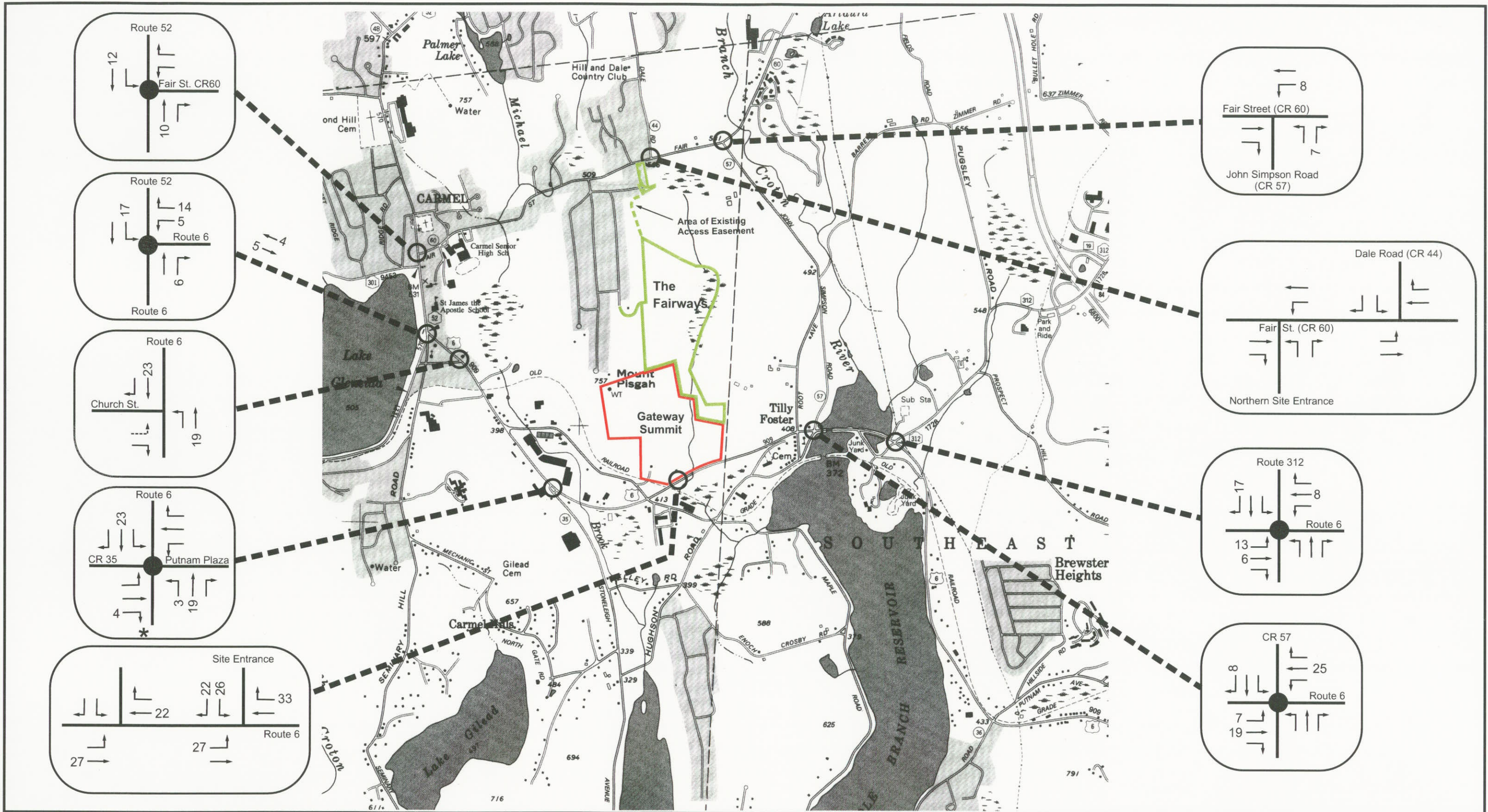
Figure J-10: Saturday Gateway Residential Site Generated Traffic  
 Gateway Summit / The Fairways  
 Town of Carmel, Putnam County, New York  
 Base Map: NYSDOT Planimetric Map (Lake Carmel Quad)  
 Scale: 1" = 2000'





- KEY**
- Gateway Summit
  - The Fairways
  - Intersections Studied
  - Traffic Signal Controlled
  - \* Stop Controlled Channel
  - Illegal Left Turn

Figure J-11: Saturday Primary Site Generated Peak Hour Traffic  
 Gateway Summit / The Fairways  
 Town of Carmel, Putnam County, New York  
 Base Map: NYSDOT Planimetric Map (Lake Carmel Quad)  
 Scale: 1" = 2000'



- KEY**
- Gateway Summit
  - The Fairways
  - Intersections Studied
  - Traffic Signal Controlled
  - \* Stop Controlled Channel
  - Illegal Left Turn

**Note:** Hotel Area Gateway Summit Lot 1 and Lot 5

**Figure J-12: Saturday Hotel Area Site Generated Traffic  
Gateway Summit / The Fairways  
Town of Carmel, Putnam County, New York  
Base Map: NYSDOT Planimetric Map (Lake Carmel Quad)  
Scale: 1" = 2000'**